
Untitled (2016)

3 or more synthesizer for Barcelona Laptop Orchestra

Cárthach Ó Nuanáin

Instructions

Choose a square or sawtooth wave oscillator on each of the synthesizers. Adjust the envelope for slow attack and very long release.

Select a Low-Pass filter, follow the instructions in the score for manipulating the cutoff frequency and resonance.

It is not imperative to be perfectly accurate with the interpretation and timing of the score, only to listen and ensure the blend between all parts is delicate and nuanced.

For at least 3 synthesisers.

Select a complex waveform such as a square wave.

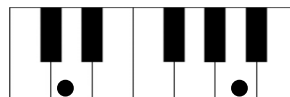
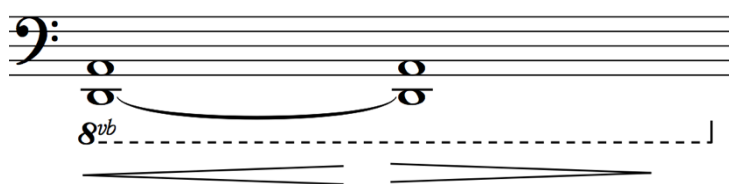
Select a low pass filter with a 12dB or 24dB slope.

Set the initial frequency and resonance low (around 7 o'clock).

Set a slow attack and slow release.

Except for section E, chords are performed in sequence by the performers, fading into the next note with the slow release and slow attack.

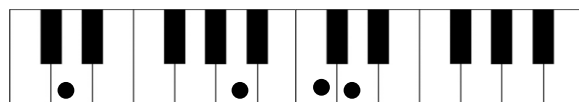
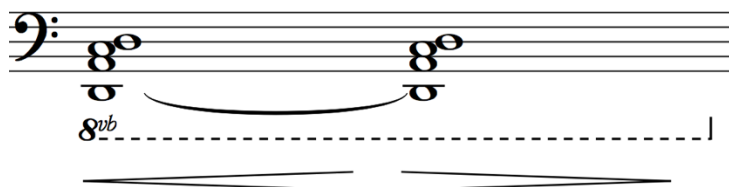
1



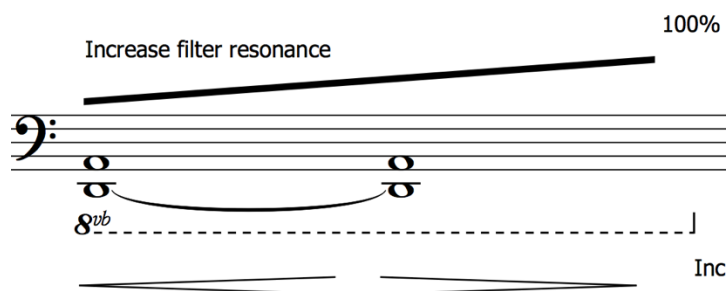
2

Pick any two notes.

7 ↑ Increase filter resonance 10-20%



3



4

Pick any chord from these three staves.

100%

Musical staff with bass clef, common time signature, and three chords. A thick black line above the staff indicates a 100% volume level. A dashed line labeled "8vb" indicates an octave reduction. Below the staff are two trapezoidal shapes representing a piano's sound envelope.



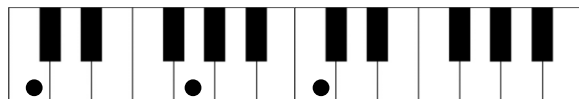
100%

Musical staff with bass clef, common time signature, and three chords. A thick black line above the staff indicates a 100% volume level. A dashed line labeled "8vb" indicates an octave reduction. Below the staff are two trapezoidal shapes representing a piano's sound envelope.



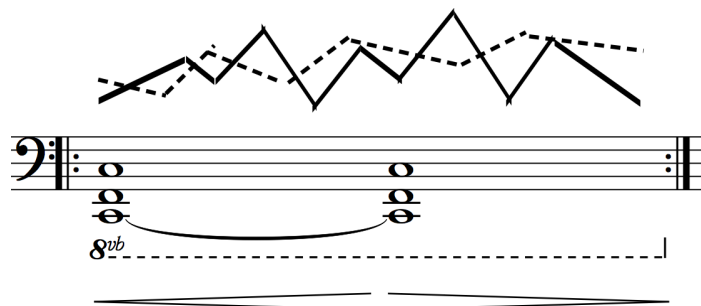
100%

Musical staff with bass clef, common time signature, and three chords. A thick black line above the staff indicates a 100% volume level. A dashed line labeled "8vb" indicates an octave reduction. Below the staff are two trapezoidal shapes representing a piano's sound envelope.

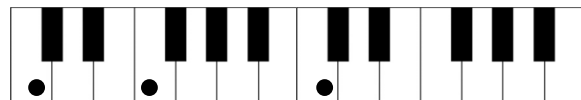


5

All play at once. Modulate cutoff and resonance freely.

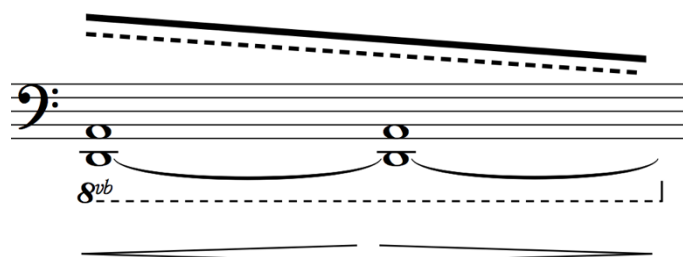


Musical notation for exercise 5. It features a bass clef staff with two chords: a triad of G2, B1, and D2, and a triad of G3, B2, and D3. A dashed line indicates an octave below the first chord, labeled '8vb'. Above the staff, a solid line shows a jagged, sawtooth-like waveform, and a dashed line shows a smoother, more rounded waveform. Below the staff, two trapezoidal shapes represent the modulation of cutoff and resonance.



6

Drop out one by one.



Musical notation for exercise 6. It features a bass clef staff with two chords: a triad of G2, B1, and D2, and a triad of G3, B2, and D3. A dashed line indicates an octave below the first chord, labeled '8vb'. Above the staff, a solid line shows a smooth, downward-sloping waveform, and a dashed line shows a similar but slightly more irregular waveform. Below the staff, two trapezoidal shapes represent the modulation of cutoff and resonance.

